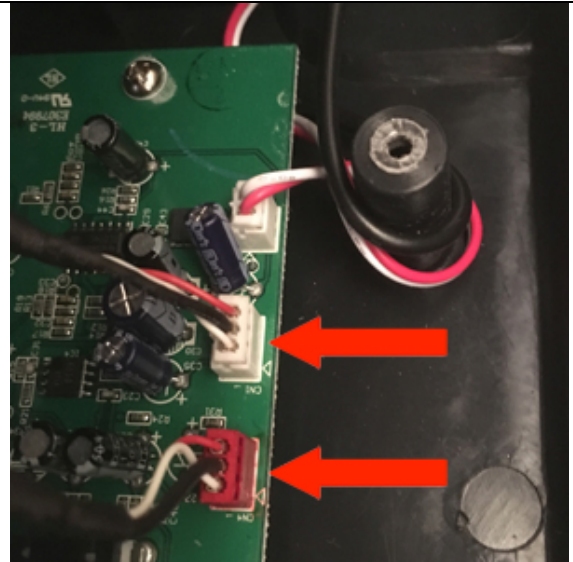
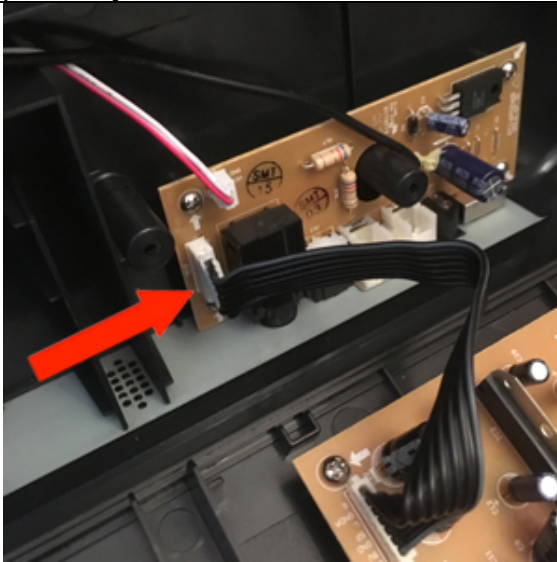


Celestion AN2075 Replacement Speaker Installation Guide

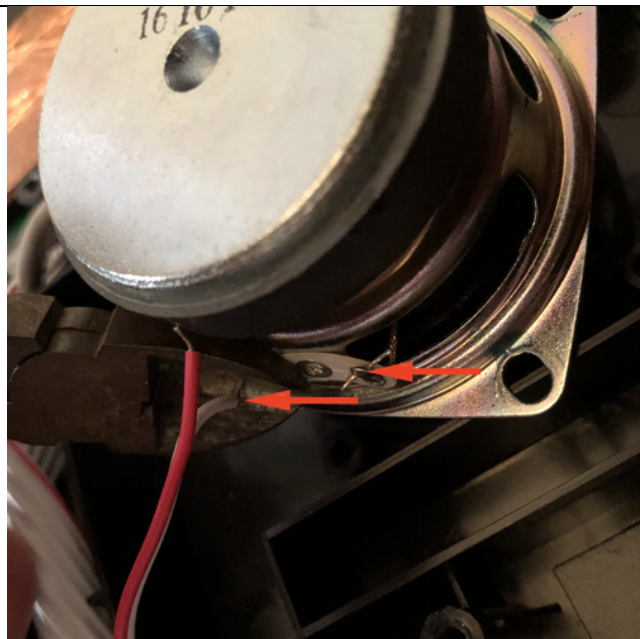
The kit should contain:
 x1 Celestion AN2075 Speaker
 x2 Connection Butts

1 Ensure PT01 is powered off and not connected to the mains. With the top cover closed, turn over the PT01 and remove the 8 screws from the base. Gently lift the base up from one side and locate both the **USB Board** and **Mains In Board**. Disconnect the ribbon plug and 2 cables respectively.



2 Separate the two sections and prepare to remove the stock speaker.

3 Unscrew and lift the speaker from the base, then **cut** the 'red' and 'white' speaker wires with a pair of snips.



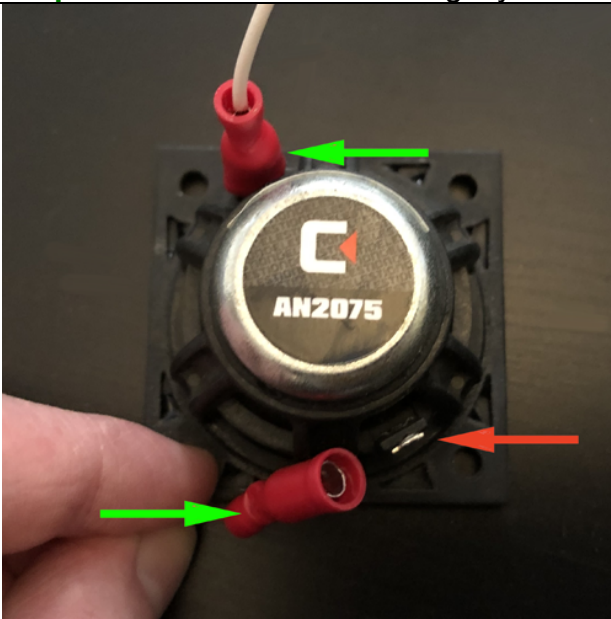
4 Screw the **Celestion AN2075** speaker into position.

With pliers, **crimp** the end of the 'red' and 'white' speaker wires into the **Connection Butt** base. Ensure there is a solid connection.

Gently crimp the open end of the **Connection Butt** to allow the **Connection Butt** to be pushed into the **Speaker Post**.

Ensure the 'red' speaker cable is pushed onto the 'red' marked **Speaker Post** and the 'white' speaker cable is pushed onto the other post.

Crimp both **Connection Butts** tightly to the **Speaker Posts**.



5 Fit the turntable back together by connecting the ribbon plug and 2 cables respectfully as per Step 1.